

SETTING UP YOUR REMOTE DESKTOP

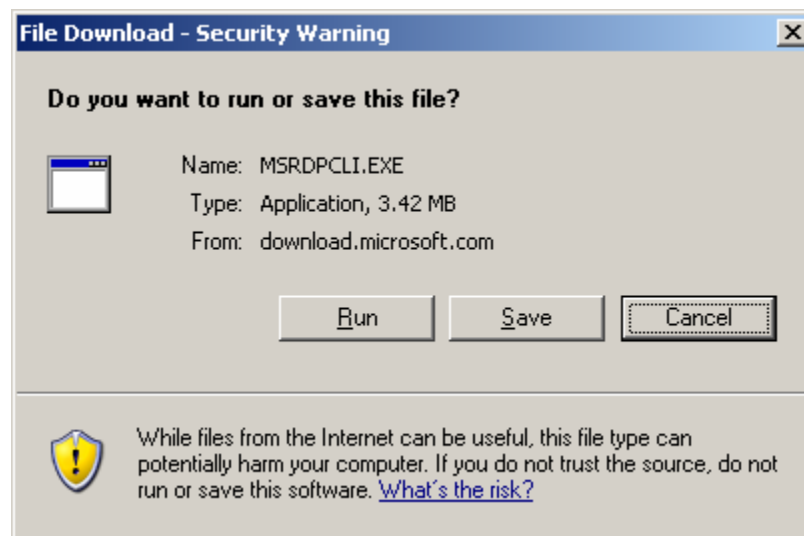
This section will assist you in setting your Remote Desktop Connection. This will allow you to create an icon for easy access to your virtual desktop.

DISCLAIMER: All images have been taken from a system running Windows XP. Individual screen windows and options may be slightly different, but the main functions will remain the same.

Start by clicking the Start Button in the bottom left corner of your desktop window. This should bring up a menu with options like Programs, Documents and Settings. Drag your mouse over Programs and another menu will appear. Move the mouse onto that menu and over the category Accessories. Another menu will appear, then move your cursor over the Communications category. Click on Remote Desktop Connection in that final menu. If you have Remote Desktop Connection installed on your system skip this next step and continue to **Configuring Remote Desktop Connection**.

Installing Remote Desktop Connection

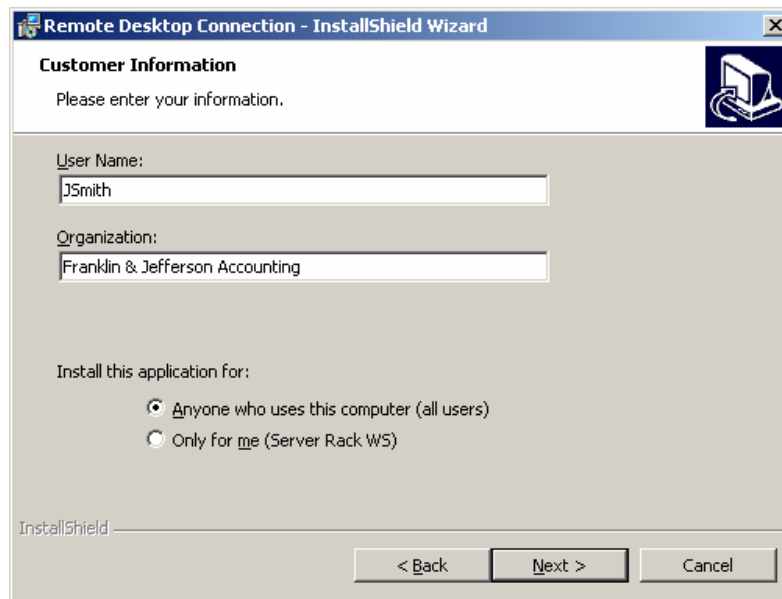
If you do not have Remote Desktop open your web browser and go to <http://www.expertnetworks.us/downloads/msrdpcli.exe>. This will open a new page that will allow you to download the program. Click the Download button and window will pop up like this one.



Click Run and allow the program to install. If you get a security warning, just continue to install the program.

When the first window entitled **Remote Desktop Connection – InstallShield Wizard** opens click the button Next>. This will open a License Agreement which you can review. Click the option for **I accept the terms in the license agreement** and click Next>.

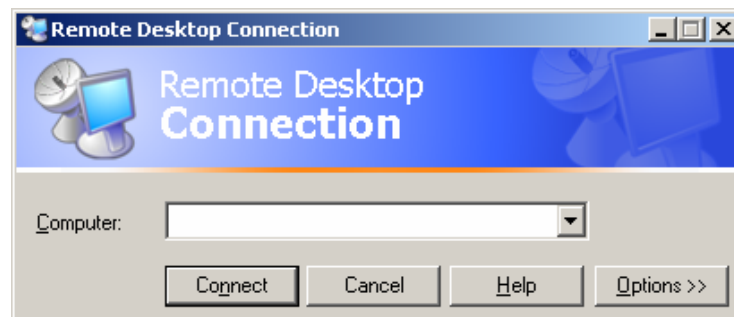
In the next window enter the user name provided by eXpert Networks into the User Name: box and the Organization: should be your company name like the following.



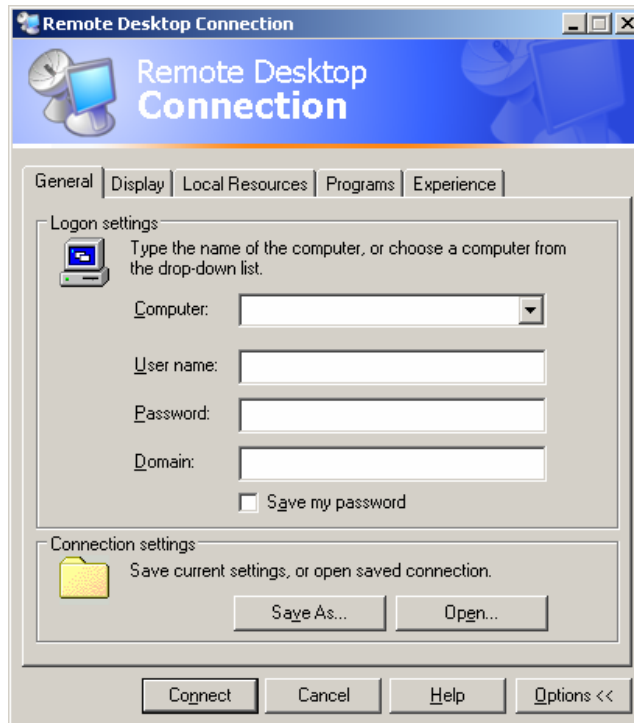
When the next window appears click the Install button. This will install Remote Desktop Connection. To open the program follow the instructions at the beginning of this section.

Configuring Remote Desktop Connection

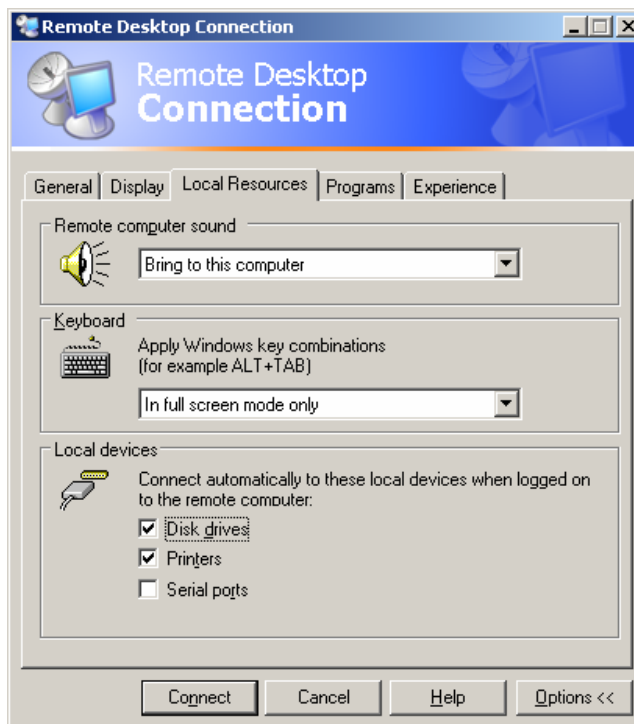
When you open Remote Desktop Connection this window will open.



Click the Options >> button and the window will expand to allow you to create a custom RDC for your desktop.

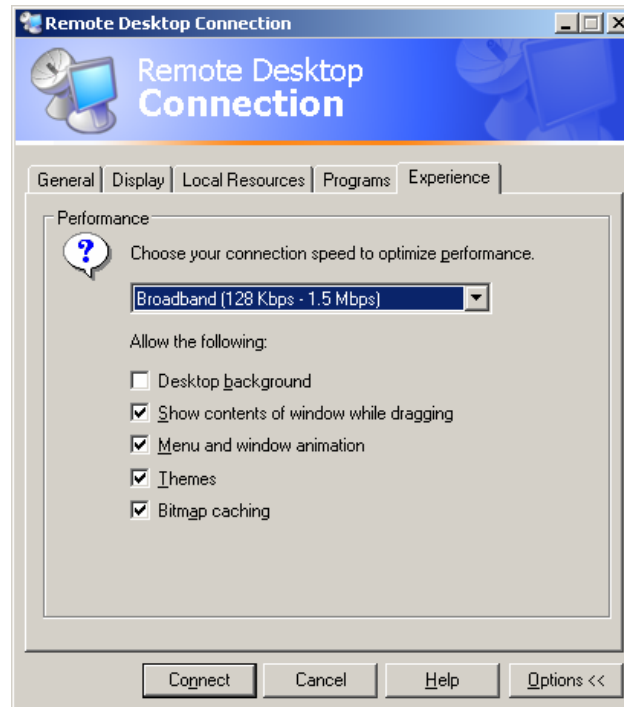


Click the Local Resources Tab and make sure that in the Local Devices area, at the bottom of the window you check the box next to Disk Drives. This will allow you to access files on your personal computer from your hosted desktop. You may also want to select the Serial ports if you have a device that you wish to use with your Remote Desktop that is connected by a serial cable.

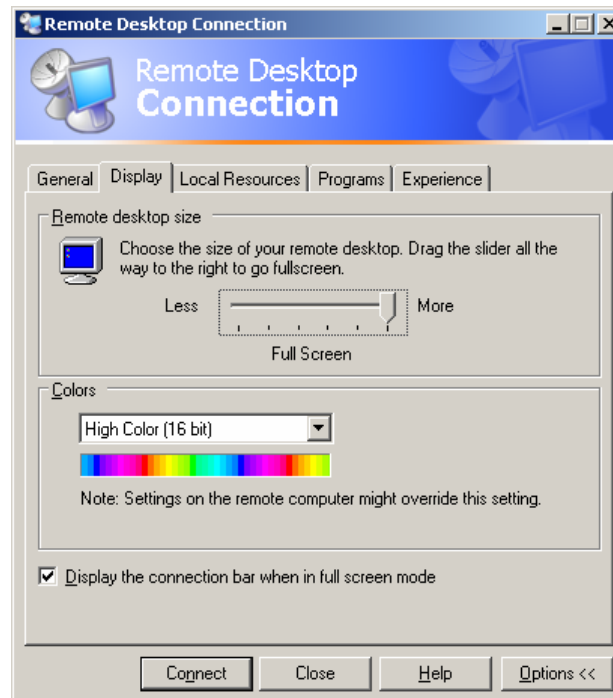


You can skip this step but we highly recommend it.

Now click on the Experience Tab. Set the drop down menu to the internet connection you have. Most likely Broadband. The connection will then be able to adequately display your desktop.



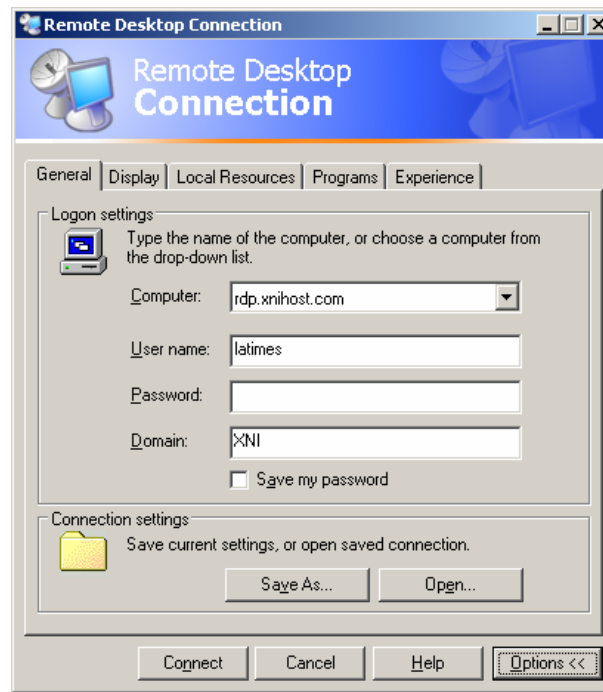
Next click on the Display Tab. Set the Remote desktop size to Full Screen. This will default your Remote Desktop screen to the resolution of settings on your PC.



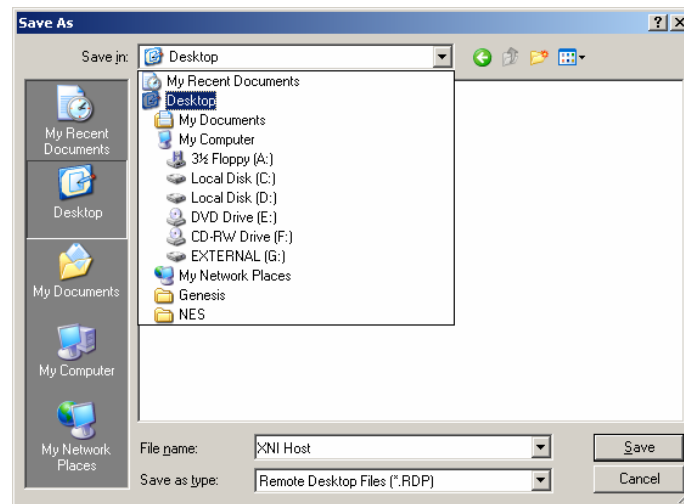
The Colors you select will depend on your internet connection. For slower connections you might have to use 256 Colors. 256 Colors can appear grainy so we normally recommend you set your Colors to High Color (15Bit) or High Color (16 Bit). Unless you have an extremely fast connection True Color (24 Bit) will only slow down your connection and result in poor performance.

Return to the General Tab and enter in the following information.

Computer: ***your company name.xnihost.com***
User Name: (User name provided by eXpert Networks.)
Password: (Leave this area blank. Due to security reasons you will have to provide the password when you log in.)
Domain: **XNI**



Once all the information has been entered click Save As... and the Save As window will come up. Click the down arrow ▼ next to the Save in: window to open the computer drop down menu. Select Desktop towards the top of the options



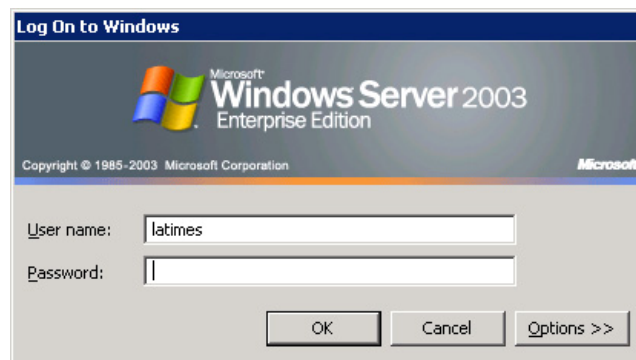
For the purposes of this manual we will name the file **XNI Host** but you can name it whatever you like. Click Save to put a permanent icon on your desktop for easy access to your Remote Desktop.

If you have trouble please visit <http://www.expert-networks.us/chat.html> and a technician will assist you.

LOGGING INTO YOUR REMOTE DESKTOP

Double Click on the XNI  Host icon.

This should bring up the log in screen for your remote desktop.



Type in your user name and password and click OK. If you do not know your User name: or Password please visit <http://www.expert-networks.us/chat.html> and a technician will assist you.

Please be patient.

Once it has finished loading, your Remote Desktop should look just like a normal desktop.

Your desktop will be equipped with all the programs you will need. If you require another specific program we can add it to our system but you will have to acquire a license from the manufacturer. eXpert Networks can do all this for you.